



# Iowa Ag News – Cattle on Feed

Iowa Field Office · 210 Walnut Street Ste 833 · Des Moines IA 50309 · (515) 284-4340 · (800) 772-0825  
fax (515) 284-4342 or (800) 719-1794 · [www.nass.usda.gov/ia](http://www.nass.usda.gov/ia)

Cooperating with the Iowa Department of Agriculture and Land Stewardship

May 17, 2013

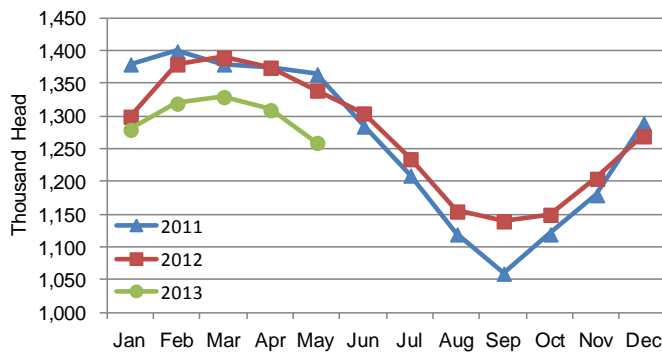
Media Contact: Greg Thessen

**Cattle and calves on feed** for slaughter market in Iowa for all feedlots totaled 1,260,000 on May 1, 2013 according to the USDA, National Agricultural Statistics Service, Iowa Field Office. The inventory is down 4 percent from April 1, 2013 and down 6 percent from May 1, 2012. Feedlots with a capacity greater than 1,000 head had 620,000 head on feed, down 2 percent from last month and down 5 percent from last year. Feedlots with a capacity less than 1,000 head had 640,000 head on feed, down 6 percent from last month and down 7 percent from last year.

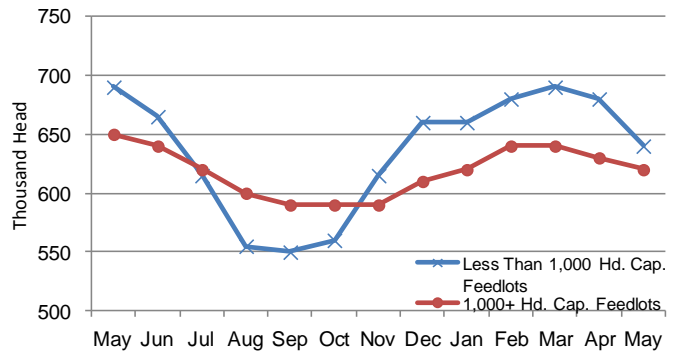
**Placements** during April totaled 140,000 head, an increase of 7 percent from last month and up 32 percent from last year. Feedlots with a capacity greater than 1,000 head placed 89,000 head, up 25 percent from last month and up 62 percent from last year. Feedlots with a capacity less than 1,000 head placed 51,000 head. This is down 15 percent from last month and unchanged from last year.

**Marketings** for April were 185,000 head, up 28 percent from last month and up 35 percent from last year. Feedlots with a capacity greater than 1,000 head marketed 97,000 head, up 26 percent from last month and up 35 percent from last year. Feedlots with a capacity less than 1,000 head marketed 88,000 head, up 29 percent from last month and up 35 percent from last year. Other disappearance totaled 5,000 head.

**Cattle on Feed, Inventory on all Feedlots, Iowa: 2011-2013**



**Cattle on Feed, Inventory by Feedlot Capacity, Iowa: Past 12 Months**



## All Cattle on Feed, Iowa

Item	Lots 1,000+ Head	Lots Less than 1,000 Head	All Lots
	(1,000 Head)	(1,000 Head)	(1,000 Head)
Cattle on Feed, April 1, 2013 .....	630	680	1,310
April Placements .....	89	51	140
April Marketings .....	97	88	185
April Other Disappearance .....	2	3	5
Cattle on Feed, May 1, 2013 .....	620	640	1,260

## Cattle on Feed: Number on Feed, Placements, Marketings, and Other Disappearance by Month, 1,000+ Capacity Feedlots

[Cattle and calves on feed are animals for slaughter market being fed a ration of grain or other concentrates and are expected to produce a carcass that will grade select or better.]

State	Cattle on Feed May 1			Placements during April			Marketings during April			April Disappearance other than Slaughter <sup>1</sup>		
	2012	2013	'13 as % of '12	2012	2013	'13 as % of '12	2012	2013	'13 as % of '12	2012	2013	'13 as % of '12
	(1,000 Head)	(1,000 Head)	(Percent)	(1,000 Head)	(1,000 Head)	(Percent)	(1,000 Head)	(1,000 Head)	(Percent)	(1,000 Head)	(1,000 Head)	(Percent)
Arizona .....	276	275	100	26	26	100	27	28	104	1	1	100
California .....	475	490	103	45	65	144	58	52	90	2	3	150
Colorado .....	1,030	960	93	120	140	117	150	150	100	10	10	100
Idaho .....	215	210	98	28	33	118	36	36	100	2	2	100
<b>Iowa .....</b>	<b>650</b>	<b>620</b>	<b>95</b>	<b>55</b>	<b>89</b>	<b>162</b>	<b>72</b>	<b>97</b>	<b>135</b>	<b>3</b>	<b>2</b>	<b>67</b>
Kansas .....	2,080	2,060	99	300	350	117	380	365	96	10	15	150
Nebraska .....	2,460	2,390	97	370	450	122	420	470	112	20	10	50
Oklahoma .....	295	295	100	47	51	109	70	60	86	2	1	50
South Dakota ..	245	225	92	32	28	88	40	32	80	2	1	50
Texas .....	2,710	2,540	94	410	435	106	465	470	101	15	15	100
Washington .....	224	220	98	28	26	93	34	35	103	3	4	133
Other States ....	450	450	100	60	57	95	63	60	95	8	5	63
United States ..	11,110	10,735	97	1,521	1,750	115	1,815	1,855	102	78	69	88

(D) Withheld to avoid disclosing data for individual operations.

<sup>1</sup> Includes death loss, movement from feedlots to pasture, and shipments to other feedlots for further feeding.

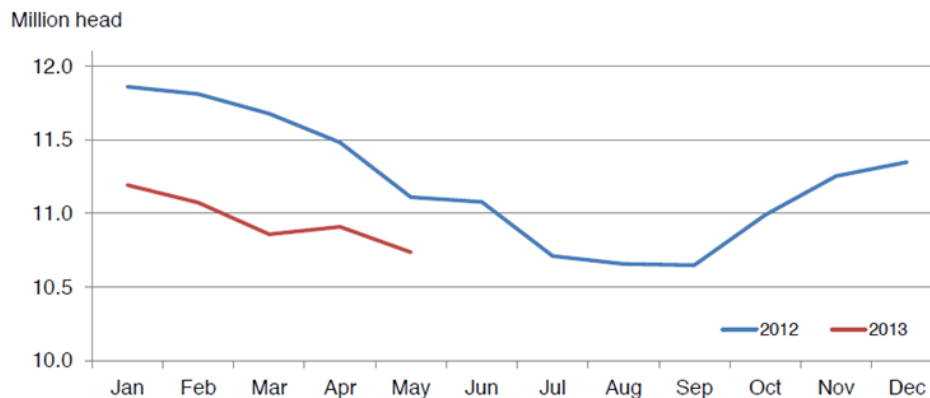
## United States Cattle on Feed

Cattle and calves on feed for slaughter market in the United States for feedlots with capacity of 1,000 or more head totaled 10.7 million head on May 1, 2013. The inventory was 3 percent below May 1, 2012.

Placements in feedlots during April totaled 1.75 million, 15 percent above 2012. Net placements were 1.68 million head. During April, placements of cattle and calves weighing less than 600 pounds were 375,000, 600-699 pounds were 270,000, 700-799 pounds were 455,000, and 800 pounds and greater were 650,000.

Marketings of fed cattle during April totaled 1.86 million, 2 percent above 2012. Other disappearance totaled 69,000 during April, 12 percent below 2012.

**Cattle on Feed Inventory on 1,000+ Capacity Feedlots – United States**



The complete report can be found under **Publications** on the USDA NASS website at [www.nass.usda.gov](http://www.nass.usda.gov).